



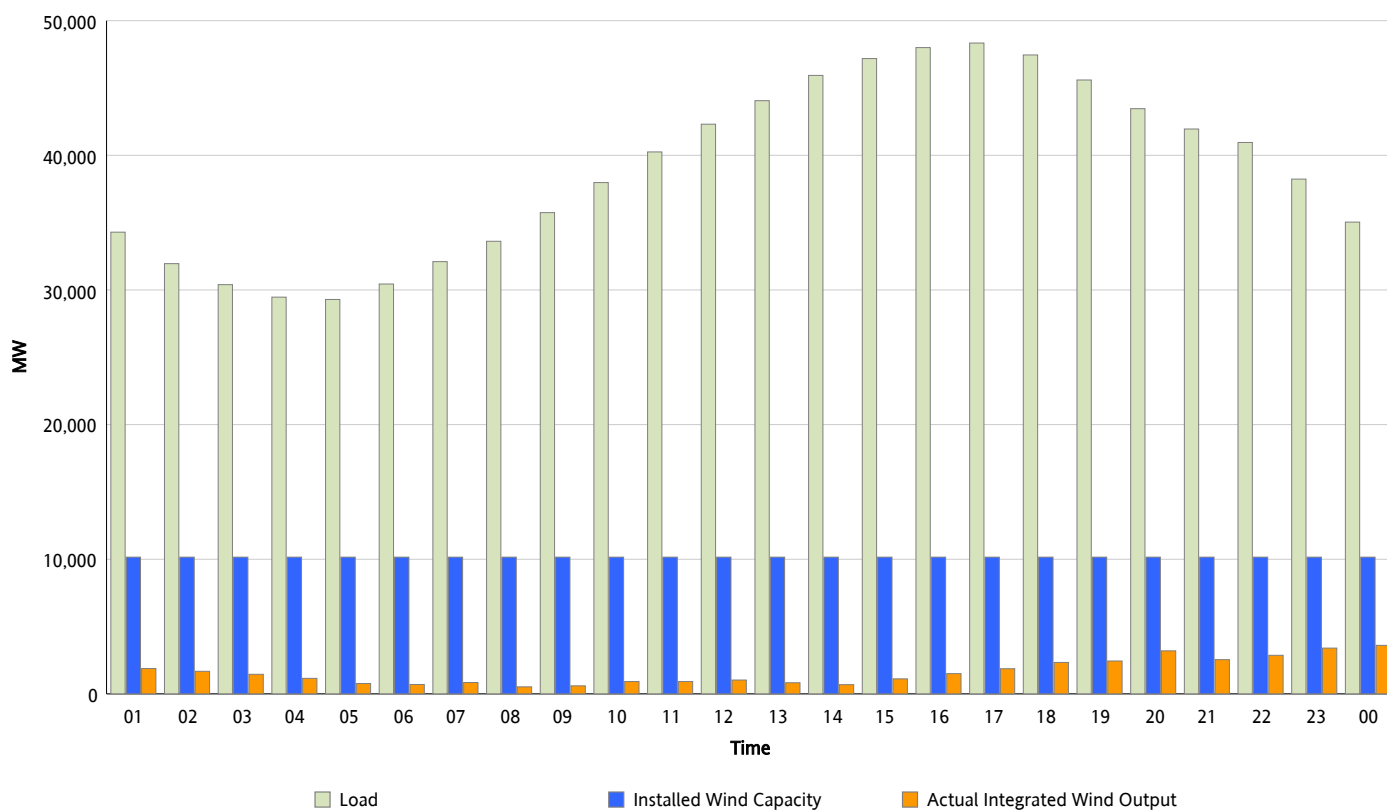
## ERCOT Grid Operations

### Wind Integration Report : 06/07/2013

Peak Load	48,341 MW
Load Peak Hour (HE)	17
Wind Over Peak	1,869 MW
Wind Record 05/02/13	9,674 MW
Max Wind Value*	3,694 MW
Wind Peak Time	23:22
Wind Integration %	10.41 %

#### Hourly Average Actual Load vs. Actual Wind Output

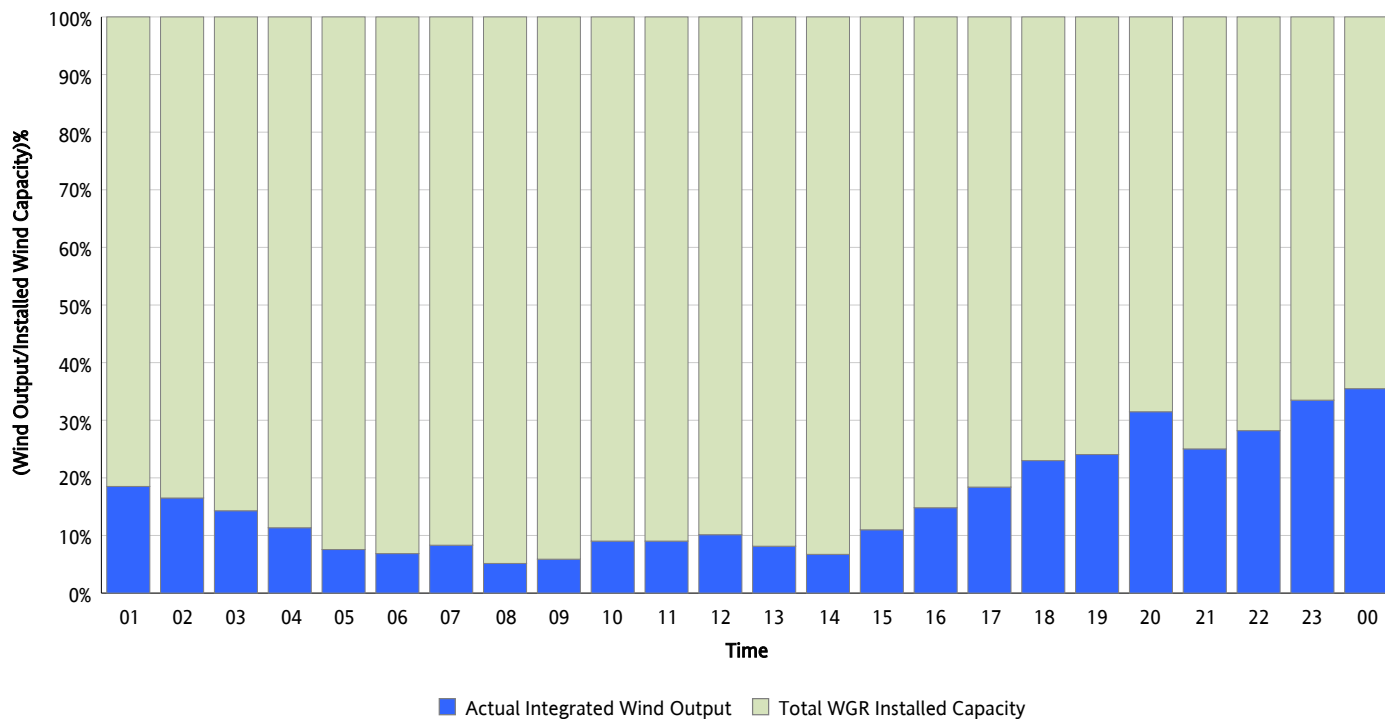
06/07/2013



\* Wind Record and Wind Max represent instantaneous values and the rest of the values are integrated over the hour

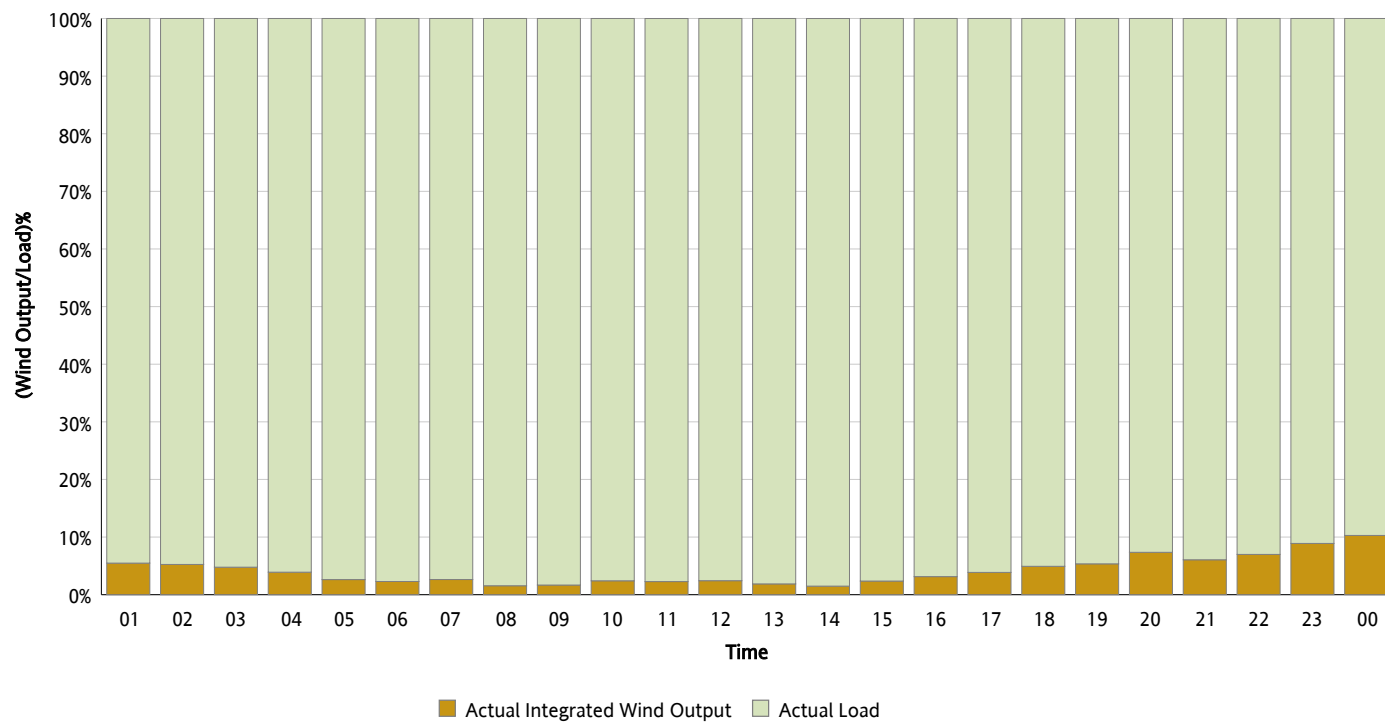
## Actual Wind Output as a Percentage of the Total Installed Wind Capacity

06/07/2013



## Actual Wind Output as a Percentage of the ERCOT Load

06/07/2013



## ERCOT Load vs. Actual Wind Output

05/31/2013 - 06/07/2013

